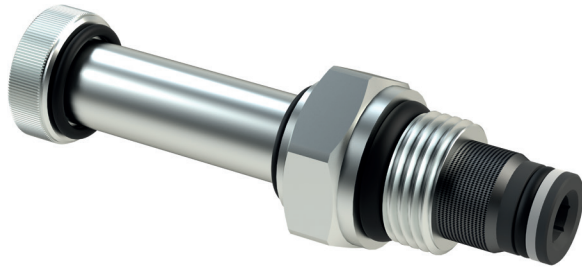


EC082A

VALVOLE A COMANDO ELETTRICO SAE8 2 VIE/2 POSIZIONI DIRETTE
2 WAYS/2 POSITIONS SAE8 ELECTRIC VALVES - DIRECT ACTING



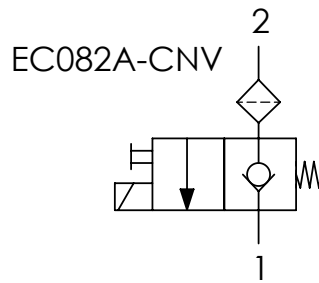
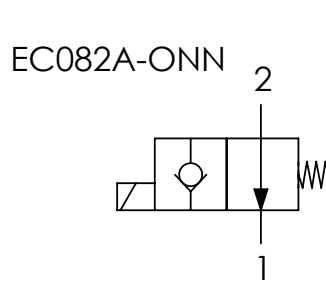
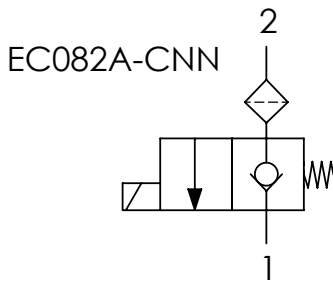
CODICE ORDINAZIONE
ORDERING CODE

01
EC082A-

02

01	VALVOLE A COMANDO ELETTRICO SAE8 2 VIE/2 POSIZIONI DIRETTE (2 WAYS/2 POSITIONS SAE8 ELECTRIC VALVES - DIRECT ACTING)	EC082A-	
02	SCHEMA (CIRCUIT)	Normalmente chiusa (Normally closed)	CNN
		Normalmente aperta (Normally open)	ONN
		Normalmente chiusa + emergenza (Normally closed + emergency)	CNV

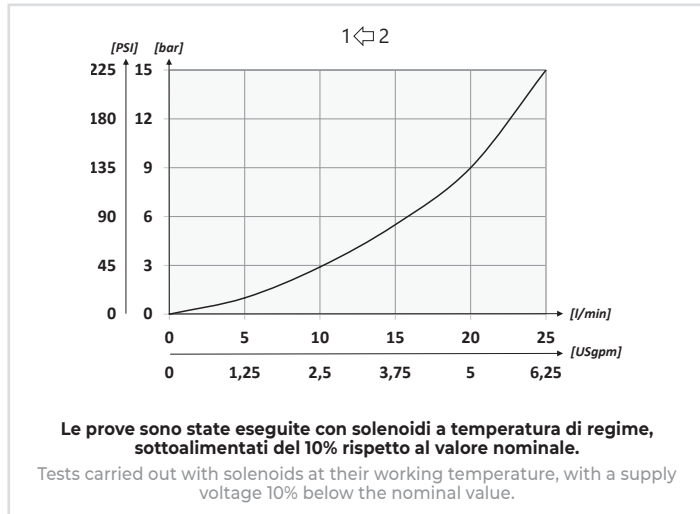
SCHEMA IDRAULICO / HYDRAULIC CIRCUIT



DATI TECNICI / TECHNICAL DATA

Olio idraulico - Mineral oil	ISO 6743/4 (DIN 51524)
Viscosità olio - Oil viscosity	15-250 mm ² /s (15 to 250 cSt)
Classe di contaminazione max Max contamination index	ISO 4406:1999 Classe 18/16/13
Temperatura dell'olio - Oil temperature	-20°C +80°C -4°F +176°F
Temperatura ambiente - Environment temperature	-20°C +50°C -4°F +122°F
È indispensabile l'utilizzo di un filtro per proteggere la valvola (filtrazione consigliata 15 µm) It is necessary a filter use to protect the valve (advised filtration 15 µm)	
Trafilamento massimo Max leakage	0,25 cm ³ /min - 5 gocce/min 0,015 in ³ /min - 5 drops/min

PERFORMANCES



EMERGENZA A SVITARE
(Unscrew emergency)

Ch.24

59 (2.32)

26,2 (1.03)

Ø 12,7 (0.50)

3/4-16UNF-2A

CNN-CNV	BOBINA 18 W (18 W Coil)
ONN	BOBINA 22 W (22 W Coil)

BOBINA E CONNETTORE VEDI PG. 102-103
COIL AND CONNECTOR SEE PG. 102-103

CARATTERISTICHE TECNICHE / TECHNICAL CHARACTERISTICS

TIPO TYPE	A	PORTATA MAX (l/min) MAX FLOW (USgpm)	PRESSIONE MAX (bar) MAX PRESSURE (PSI)	PESO APPROX (kg) APPROX WEIGHT (lb)	COPPIA DI SERRAGGIO TIGHTENING TORQUE Nm-lb ft	CAVITÀ CAVITY
EC082A	3/4-16UNF-2A	22 (5.8)	210 (3045)	0,12 (0.26)	30 (22)	SAE 8/2